



Priority 6: Development of national registries of quality-assured and labour market relevant training opportunities

*Information Day
Erasmus+ Forward Looking Co-operation Projects
2 February 2023*

Our context – Changing labour markets



Atypical forms of work



More frequent professional transitions



Shifting employment between sectors

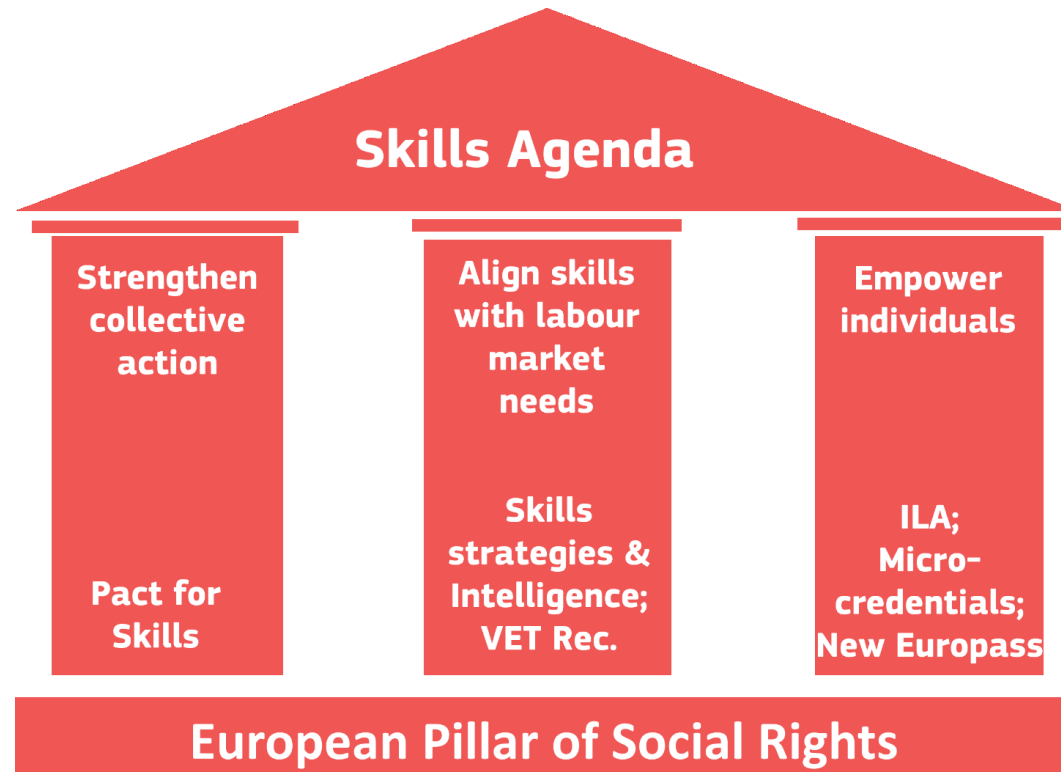


Shifting skills needs



Demographic changes

Policy focus on skills development of adults



Council Recommendation on individual learning accounts [\(link here\)](#)

Objectives



1. Support all working-age adults in accessing training
2. Increase their incentives & motivation to seek training

Financial and non-financial support



Personal accounts

Registry of eligible opportunities

Guidance & validation

Paid training leave

Way forward



EU funding

Monitoring implementation

Mutual learning

Council Recommendation on a European approach to micro-credentials for lifelong learning and employability

'Building Blocks'

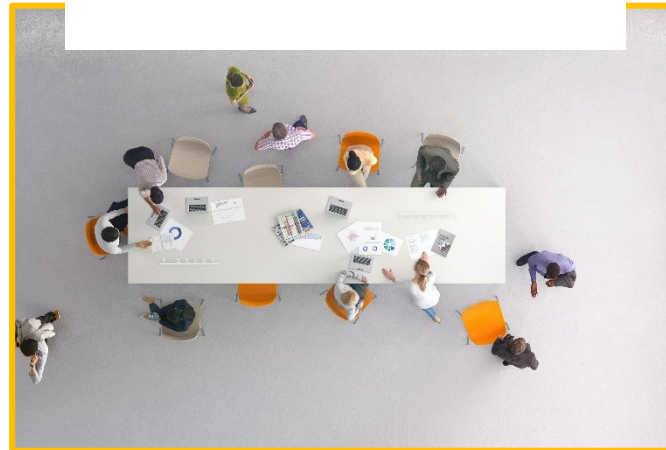


Common Definition of micro-credentials

Standard Elements

Principles for the design and Issuance of micro-credentials

Key areas for action

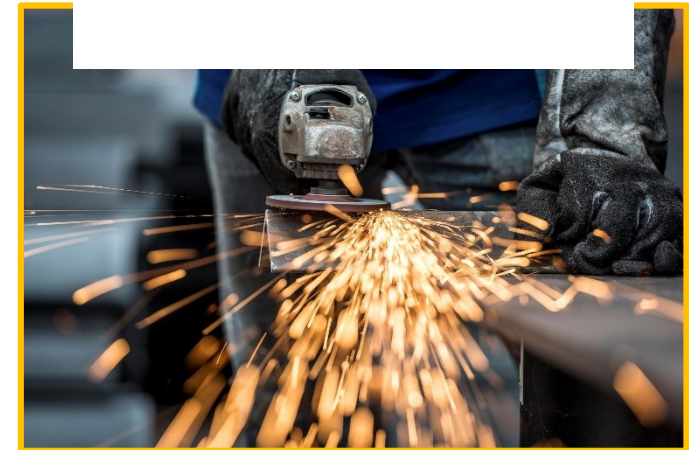


Development of ecosystems for micro-credentials

Deliver on the potential of micro-credentials

Commission Support

Focus



Education, training and skills policies

Active Labour Market Policies

Priority 6: Development of national registries of quality-assured and labour market relevant training opportunities

Expected outcomes:

To provide comprehensive and trustworthy information on learning opportunities for adults that are of good quality and will be of value on the labour market.

Ideally, also include information about available guidance and validation opportunities.

Activities for this priority

Projects should:

- Identify methods and mechanisms to help ensure that such registries a significant number of users.
- Improve the communication between the “world of education and training” and the “world of work”.
- Strike a good balance between ensuring good quality, while offering a rich variety of labour-market relevant learning opportunities.
- Develop and test appropriate governance models of registries, by involving all relevant stakeholders (public authorities, education and training institutions and providers, social partners, relevant European and national/regional stakeholder organisations etc.).
- Offer a user-friendly interface for users, while pooling information from diverse sources.
- Seek to catalyse additional investments for training (e.g. by becoming a trusted reference for public schemes providing financial support for training etc.)

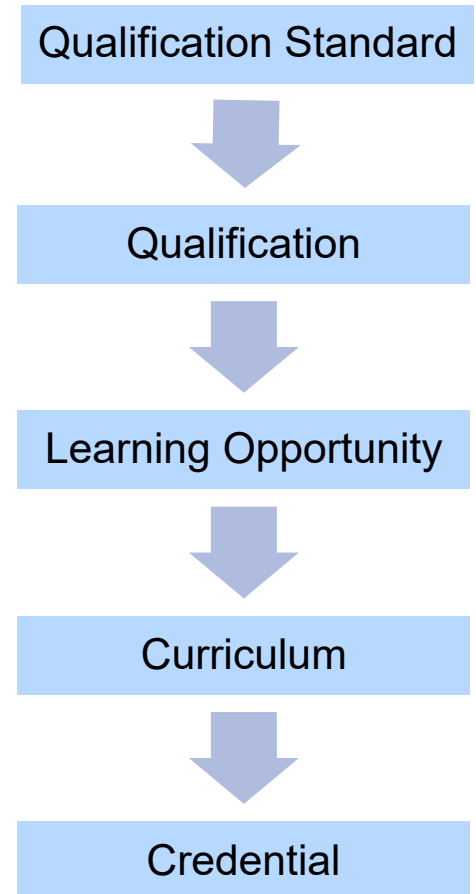
Specific aspect to be assessed

Specific aspect to be assessed as part of the award criteria for Priority 6:

***Interoperability** with other national registries and the Europass Platform thanks to their use of the standards of the **European Learning Model** (data scheme).*

- A single data model which can be used at all stages of a learning lifecycle
- Can be applied to any educational/learning process, whether formal, non-formal or informal
- Includes information on accreditation (where relevant)
- ELM is used on the Europass platform & in other EC services (e.g. European Blockchain Service Infrastructure)
- ELM has the potential for a much wider use (Erasmus+ mobility, Single Digital Gateway)

→ **ELM is the key for interoperability in the field of learning in Europe**



Ana Andromeda

Sveučilište u Splitu

Master of Science in Civil Engineering ▾

Applied mathematics course ▾

Applied mathematics Study visit ▾

Concrete structures I course ▾

Dynamics of structures and earthquake engineering course ▾

Geotechnical engineering course ▾

Stability of structures course ▾

Postgraduate doctoral study

Civil engineer

Recognition for credit

Master of Science in Civil Engineering

Awarding Date: 20/09/2019 00:00 GMT +0200

Awarding Body: Fakultet Građevinarstva, Arhitekture i Geodezije

This is the overall description of the achievement of the Master of Science in Civil Engineering, that is linked to the overall credential, together with its sub-achievements.

Proven by

Title	Grade
Overall Assessment	excellent (5)

Influenced by: Applied mathematics course, Applied mathematics Study visit, Concrete structures I course, Dynamics of structures and earthquake engineering course, Geotechnical engineering course, Stability of structures course

Entitles Owner to: Postgraduate doctoral study , Civil engineer , Recognition for credit

Sub-Achievements

Applied mathematics, Concrete structures I, Dynamics of structures and earthquake engineering, Geotechnical engineering, Stability of structures

Specification 🔗

Ach-Spec-ID-Scheme identifier: AchSpecID-72

Learning Outcomes:

LO1 related to applied mathematics ▲

LOID-Scheme identifier: LOID-73a

To formulate equations of mathematical physics for engineering problems, and to solve them analytically or with numerical methods.

Type: knowledge

Reusability Level: cross-sector skills and competences

Related ESCO Skills: use mathematical tools and equipment, execute analytical mathematical calculations, geodesy

Related Skills: applied mathematics, perform engineering calculations, construct earthquake resistant structures

Includes **400 properties** to describe

- **Organisations**
- Details of the **credential owner**
- **Achievements** (including grades and references to EQF/NQF levels, ISCED-f codes, and learning outcomes referencing ESCO of other external skill/competence frameworks)
- **Activities** (by start and end dates; format, mode and volume of learning)
- **Entitlements** (Entitlement to work as an attorney or enroll in further education)

One of the key sources of ELM is the **EQF Recommendation**:

- Annex VI: “Elements of data fields for the electronic publication of information on qualifications with an EQF level”
- Recital 24: “...The use of common data structures and formats would facilitate the understanding and use of published information on qualifications”

The **Council Recommendation on a European approach to micro-credentials** for lifelong learning and employability:

- Recommendation 6: “Member States are recommended to adopt and promote the use of the European standard elements to describe a micro-credential (as described in Annex I)
- Annex I: “European standard elements to describe a micro-credential”

ANNEX VI
Elements for data fields for the electronic publication of information on qualifications with an EQF level

DATA			Required/Optional
Title of the qualification			Required
Field ⁽¹⁾			Required
Country/Region (code)			Required
EQF Level			Required
Description of the qualification ⁽³⁾	Either	Knowledge	Required
		Skills	Required
		Responsibility and autonomy	Required
	Or	Open text field describing what the learner is expected to know, understand and able to do	Required

Legacy Data Model

- EQF model
- Ploteus Model
- LOQ Portal
- Republication of the data into a single EU Portal

Qualifications Metadata Schema – ELM v.1

- QMS1
- Adding open interoperability standards

Europass Data Models – ELM v.2

- QMS2, LOMS, AMS
- Extending to all Europass learning use cases

European Learning Model – ELM v.3

- ELM, Application Profiles
- Integrating the individual models

Interoperability

- Key concepts: **open data** policy and **interoperability**
- ELM v.3 will be supported exclusively as of **spring 2023**
 - **Semantic interoperability**
 - **Open**: published at the Commission's **Publication Office** and (upcoming) data model browser
 - **Support national/sectoral extensions**

Specific eligibility criteria

The consortium must include:

- **at least 3 applicants** (coordinator and full partners) from a **minimum of 3 Member States** or third countries associated to the programme
- public or private entities in charge of, or having a high degree of responsibility for (or influence over), the organisation and/or financing and/or provision of educational services to adults (e.g. skills assessment, validation of competences, education and training, orientation and guidance), as applicants or associated partners

Specific award criterion on « Relevance »

The extent to which the proposal envisages cooperation and exchange on how to set up or enhance effective registries of quality assured and labour market relevant training opportunities that can function as a trusted reference for public or private schemes providing financial support for training and the extent to which they comply with the European Learning Model data scheme.

Project

- Grant per project: maximum 1Mio €.
- Level of co-funding: 80%.
- Duration: 24 months.
- Timeline:
 - Submission deadline: **15 March 2023 – 17.00 CET**
 - Selection results communicated to applicants: August 2023.
 - Project start dates: End of 2023 – beginning of 2024.

Where to learn more

- Read the Programme Guide: [Forward-looking projects](#), particularly Section B, **pages 296-311**.
- [Council recommendation on individual learning accounts](#) and underlying [impact assessment](#) (prepared by the European Commission)
- [Council recommendation on micro-credentials](#) and supporting [staff working document](#) (prepared by the European Commission)
- [Council recommendation on the European Qualifications Framework](#) for lifelong learning
- [European Learning Model](#)